

DERBY  
THEATRE  
PRODUCTION

# A CHRISTMAS CAROL

ORIGINAL STORY BY CHARLES DICKENS  
ADAPTED BY NEIL DUFFIELD

FRIDAY 29 NOVEMBER 2019 –  
SATURDAY 4 JANUARY 2020

Box Office 01332 593939  
Book Online [derbytheatre.co.uk](http://derbytheatre.co.uk)

Derby Theatre is part of  
UNIVERSITY OF  
DERBY



Supported by  
ARTS COUNCIL  
ENGLAND

## LEARN TO FINGERSPELL

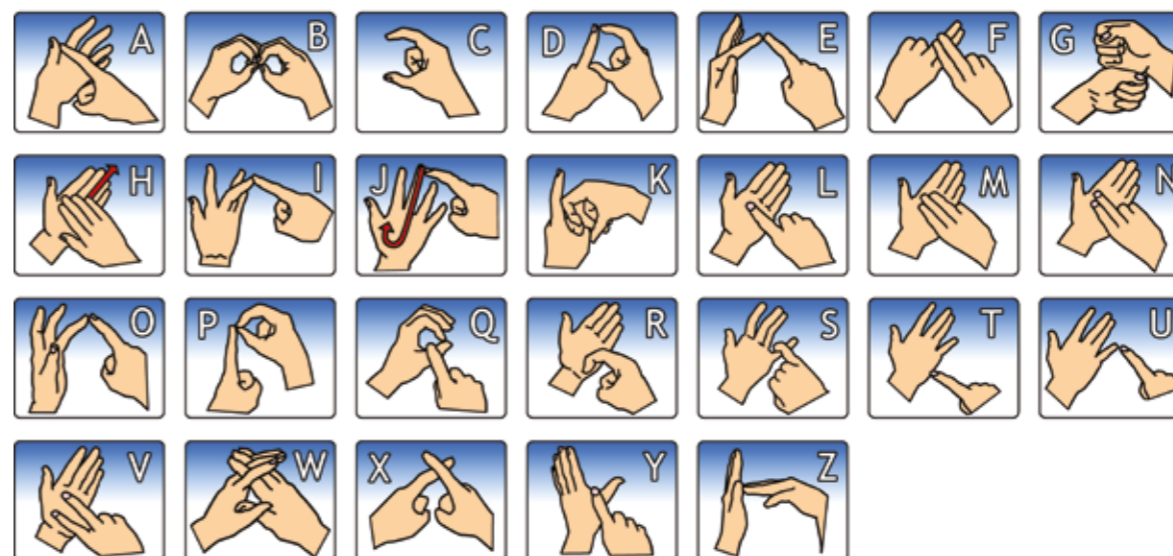
British Sign Language is integrated into this production of *The Jungle Book*.

Fingerspelling is a way of spelling words using hand movements. The fingerspelling manual alphabet is used in sign language to spell out names of people and places for which there is not a sign.

Fingerspelling can also be used to spell words for signs that the signer does not know the sign for, or to clarify a sign that is not known by the person reading the signer.

British Sign Language (BSL) uses the two-handed alphabet below.

### BSL - FINGERSPELLING ALPHABET



SIGN LANGUAGE  
FORUM

SHARE & PRACTICE BRITISH SIGN LANGUAGE ONLINE  
[WWW.SIGNLANGUAGEFORUM.COM/BSL](http://WWW.SIGNLANGUAGEFORUM.COM/BSL)

Can you fingerspell these words using the grid?

1. Your name
2. Your favourite animal
3. Mowgli
4. Baloo
5. Bagheera
6. Shere Khan
7. Akela
8. *The Jungle Book*

### SIGN NAMES

People who use or are learning BSL often choose a sign name that others can use to refer to them instead of using fingerspelling. This is often a hand movement or sign that is linked to their personality, appearance, hobby or job.

What would your sign name be?